

## IKUHART Artist-in-Residence in Awaji Island Application Guide

Experience the island's history and culture with all your senses ! !

### AWAJI THE KUNIUMI ISLAND(Japan' s Creation Myth)

This is the Kuniumi Story (Japan' s Creation Myth) which adorns the opening of the Kojiki (the oldest historical record of Japan). There, the Kojiki tells, the two Kamis Izanagi-no-mikoto and Izanami-no-mikoto churned the newly created chaotic mass below with the holy spear, briny drops dripped from the tip then solidified to form Onokorojima Island.

From Onokorojima Island Izanagi-no-mikoto and Izanami-no-mikoto procreated the Japanese islands, one by one, as husband and wife. The first of those islands to be created was Awaji.

Quoted from" The Japan Heritage Island "website

[Four stories of the island of Kuniumi, Awaji | Awaji Island Japan Heritage \(kuniumi-awaji.jp\)](http://kuniumi-awaji.jp)



IKUHA, Awaji City, where IKUHART is located, is a fishing port and farming village with a long history. The environment is sure to stimulate your creativity and inspire you to create new material.



## ■Studio Space

### ◆IKUHART Studio

[Home | IKUHART-KIKAKU \(jimdosite.com\)](http://jimdosite.com)

A space renovated from a former ironworks studio  
(the ironworks is located in a fishing town lined with old houses).



Working facilities:

Ironwork - welding, cutting, drilling, etc.

Woodwork - Full set of power tools,  
electric jigsaw, etc.

Ceramics : kiln

Other facilities : Water supply, refrigerator,  
stove, rest area



### ◆UMAYADO Studio

A space renovated from a cowshed (next to the accommodation)

This cowshed was used for dairy farming. It has been renovated to be used as a studio while retaining the traces of its past as a cowshed.

Facilities: chairs, tables, shelves



## ■Residence

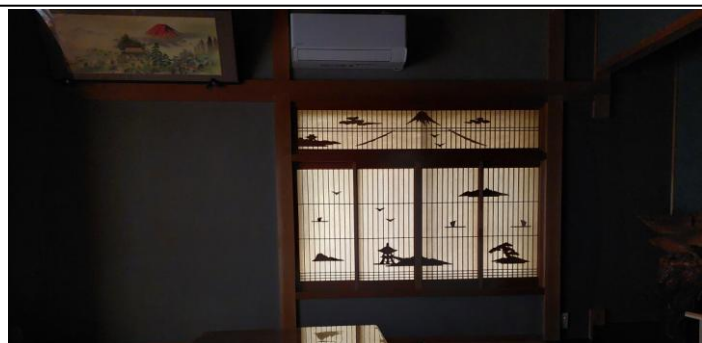
### ◆Ikuha Residency

A traditional Japanese wooden house in a beautiful rural landscape.

Shared space: kitchen, bath, shower, toilet, living room.

Facilities: wifi, washing machine.

Accommodation space: 3 bedrooms. 2 Japanese-style rooms (this room cannot be locked.)





**Residency fee** : \$250 USD for month

Including accommodation fee, Umayado studio usage fee

- \* The residence welcomes couples stay, named after the legend of the creation of the island by the Izanagi and Izanami couple, and the partner can stay for free. (Lifetime partner only)

**Option fee** : IKUHART Studio (Ironwork Woodwork ceramics) usage fee \$5 USD for day

**Payment** : Cash VISA • Mastercard • American Express, JCB, Diners Club, Discover card

**Daily expenses**: You are responsible for your own food, transportation, and entertainment.

**Other expenses**: Garbage disposal fee (if you put out more than the designated capacity)

**Supplies to bring**: Art supplies, daily items, towels, sheets

### Application Requirements

- a) Painting, Printing, Dance, Installation, Video, Sculpture (Please bring your own tools)
- b) Artists are responsible for all set-up and break-down of exhibitions and events.
- c) Artists must be able to speak and understand basic English or Japanese in daily conversations.
- d) Artists are responsible for all incidents that may occur during their stay.  
Please come equipped with your own insurance.  
Please note that IKUHART Project is not responsible for any damage or loss incurred during the stay.
- e) Residents who disturb other artists or neighbors will be asked to leave.
- f) Please refrain from visiting if you have dangerous pre-existing health conditions.
- g) The living space is kindly borrowed from Mr. Kashiwagi. Please take good care of the house.
- h) Please provide at least one piece of work created during your stay or upload your work to the internet, such as YouTube, Facebook.

If you would like to apply, please download the application form.

[PDF Download | Ikuhart Air 1 \(yanyan1925yanyan.wixsite.com\)](#)

Contact : IAIR (Ikuhart Artist In Residency) manager Akiko Takeuchi  
[yanyan1925yanyan@gmail.com](mailto:yanyan1925yanyan@gmail.com)

**Location** (場所)

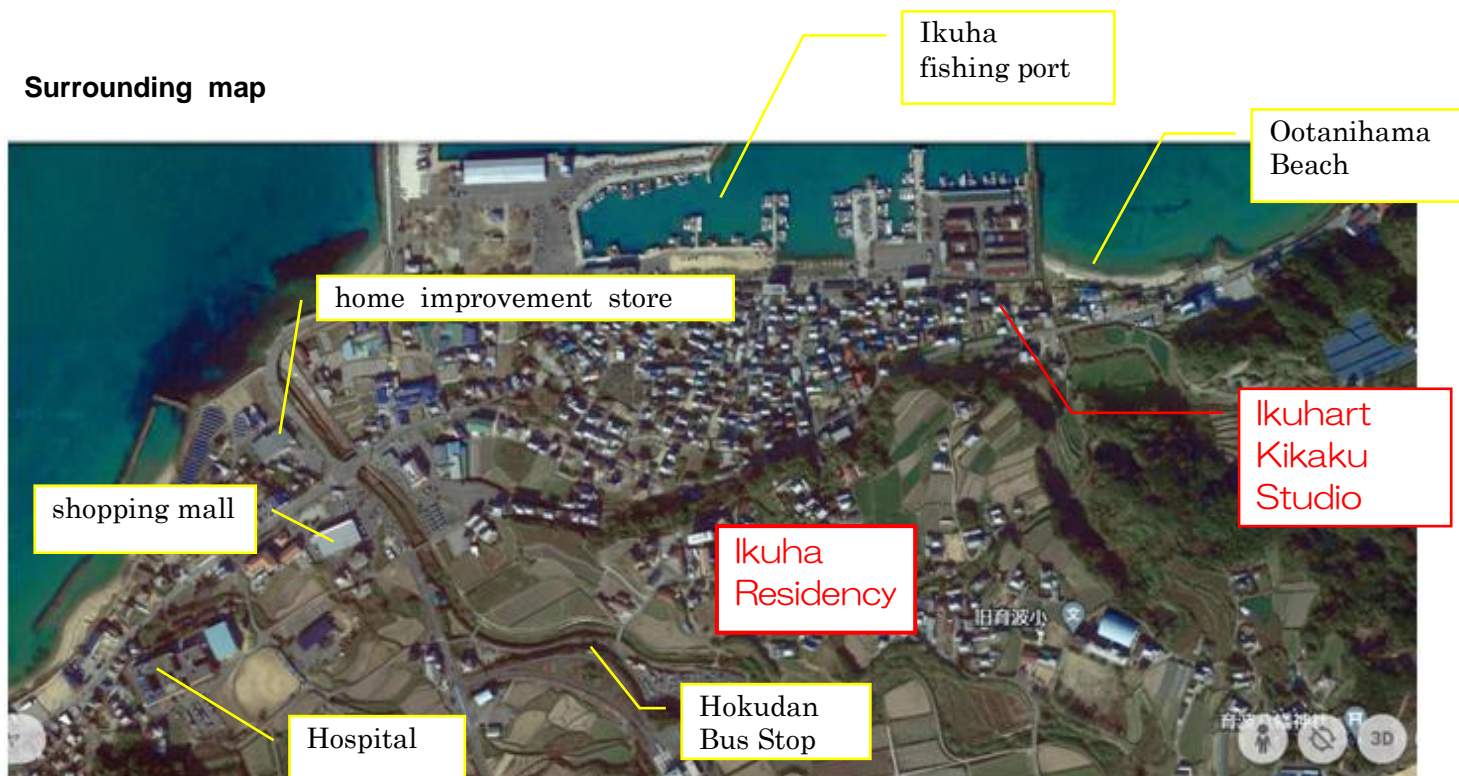
Awaji City, Hyogo Prefecture, 65 Ikuha

Awaji Island is located in the middle of the Kansai region and Shikoku region. It is conveniently located near various airports and major cities.

◦ <https://www.awajishima-kanko.jp/en/>

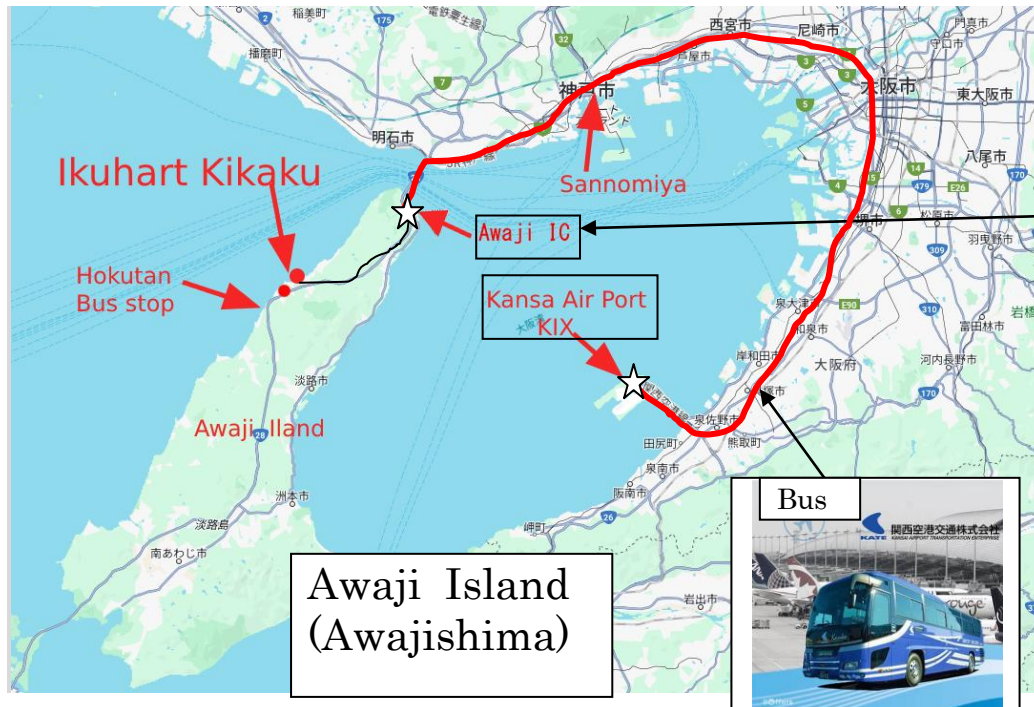


**Surrounding map**



# Access to Ikuhart Kikaku

The nearest airport to Awajishima is Kansai International Airport (KIX).  
Arriving by highway bus from Kansai International Air Port(KIX) to Awajishima



Awaji IC  
Please get off at  
this bus stop



\* If Kansai Airport is not available for your flight, please contact us again..

Awaji IC  
BUS Stop Details



Meeting point  
Near the Ferris wheel

Awaji IC  
BUS STOP

Please go through the  
underground passage  
to where the Ferris  
wheel is.(1~2 min)



## Route1 Take a direct bus from Kansai Airport to Awaji

Kansai International Airport Terminal 1 or 2 bus stop → Bus (approx. 1.5 hours) → Awaji IC bus stop

**\* Please contact us when you get on the bus because we need to pick you up at the bus stop,**

### Kansai Air Port Bus Information

Time Table departure		Teminal1	Terminal2	AwajiIC
BUS Company	運行会社	関西空港 T2	関西空港 T1	淡路IC
Tokushima Bus	徳島バス	9:52	10:05	11:36
Nakai Bus	南海バス	12:07	12:20	13:51
Honshi Kaikyo Bus	本四海峡 バス	16:07	16:20	17:51
Kansai Airport Bus	関西空港 交通	18:07	18:20	19:51

KIX to Awaji IC Fare : 3,500Yen (one way) and 6,300Yen(round trip discount)

If you are in Terminal 1

Take the bus bound for  
Naruto Tokushima  
stop No. 2

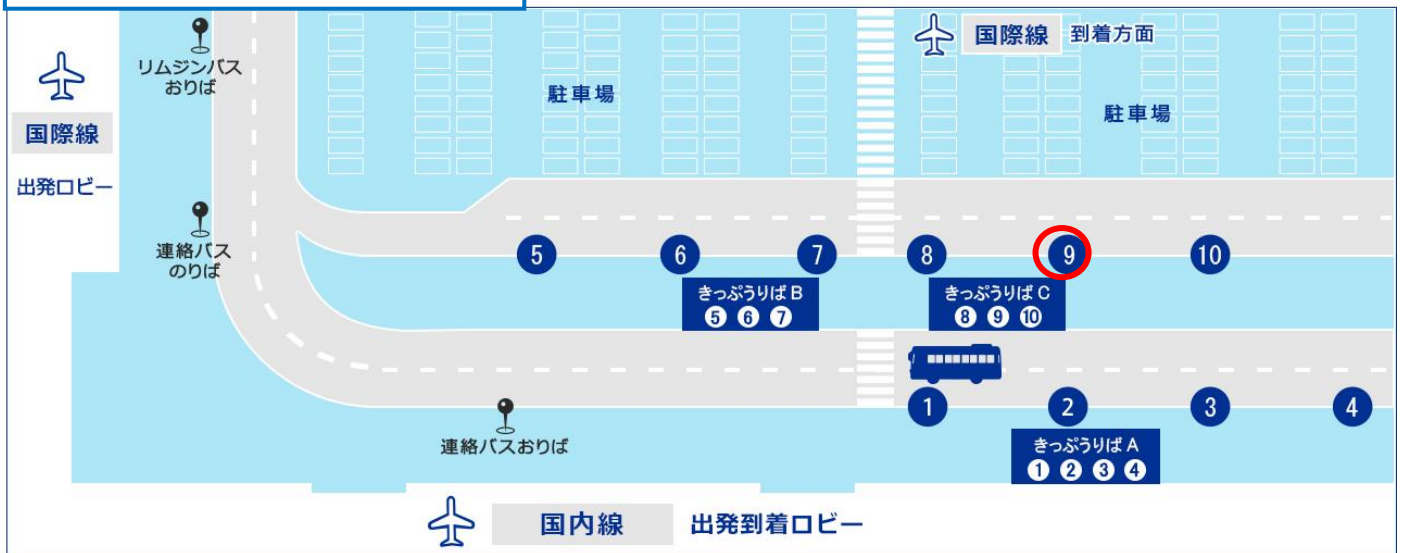
Take the bus bound for  
Awaji Naruto Tokushima  
from bus stop No. 9



- |   |   |
|---|---|
| ① 関西空港展望ホール行き                                       | ② 泉北ニュータウン・金剛・河内長野行き<br>淡路・鳴門・徳島行き            |
| ③ 和歌山行き 茨木行き<br>南港・天保山・ユニバーサル・スタジオ・ジャパン™行き          | ④ 尼崎行き 西宮行き                                   |
| ⑤ 大阪駅前・茶屋町・新梅田シティ・新大阪・千里ニュータウン行き<br>南海なんば駅行き (深夜バス) | ⑥ 神戸三宮・六甲アイランド行き<br>姫路・加古川行き<br>高野山 (奥の院前) 行き |
| ⑦ 近鉄上本町・心斎橋行き<br>高松行き あべのハルカス行き                     | ⑧ 大阪空港・蛍池駅行き<br>高速京田辺・京都駅八条口・京都市内行き           |
| ⑨ 奈良行き 近鉄学園前・学研都市行き<br>大和八木行き                       | ⑩ 天満橋行き 寝屋川・枚方・くずは行き<br>大阪城・日本橋行き 東大阪行き       |
| ⑪ なんば(OCAT)行き<br>岡山行き                               | ⑫ りんくうプレミアム・アウトレット行き                          |

Take the bus bound for  
Awaji Naruto Tokushima  
from bus stop No. 9

If you are in Terminal 2



- |   |   |
|---|---|
| ① 大阪駅前・茶屋町・新梅田シティ・新大阪・千里ニュータウン行き          | ② 大阪空港・蛍池駅行き<br>高速京田辺・京都駅八条口・京都市内行き         |
| ③ 尼崎行き 西宮行き<br>南海なんば駅行き(深夜バス)             | ④ 神戸三宮・六甲アイランド行き<br>姫路・加古川行き<br>高野山(奥の院前)行き |
| ⑤ 奈良行き 大和八木行き<br>近鉄学園前・学研都市行き             | ⑥ なんば(OCAT)行き 岡山行き                          |
| ⑦ 和歌山行き 茨木行き<br>南港・天保山・ユニバーサルスタジオ・ジャパン™行き | ⑧ 近鉄上本町・心斎橋行き 高松行き<br>あべのハルカス(天王寺駅)行き       |
| ⑨ 泉北ニュータウン・金剛・河内長野行き<br>淡路・鳴門・徳島行き        | ⑩ 天満橋行き 寝屋川・枚方・くずは行き<br>大阪城・日本橋行き 東大阪行き     |

Route2 Take a bus from Kansai Airport to" Kobe Sannomiya"

We will pick you up in Sannomiya bus stop and take you to Awaji.

		大人	小児
片道	神戸三宮・六甲アイランド⇄関西空港	2,200円	1,100円
往復	神戸三宮・六甲アイランド⇄関西空港	3,700円 (乗車日より30日間有効)	設定なし

Buses depart approximately every 20 minutes.

[Kobe Sannomiya/Rokko Island | Time table/Fares | \[Official\] Kansai International Airport Limousine Bus/ Time Table/ Bus Stop/ Fare/ Route List \(Kansai Airport Transportation Enterprise\) \(kate.co.jp\)](#)

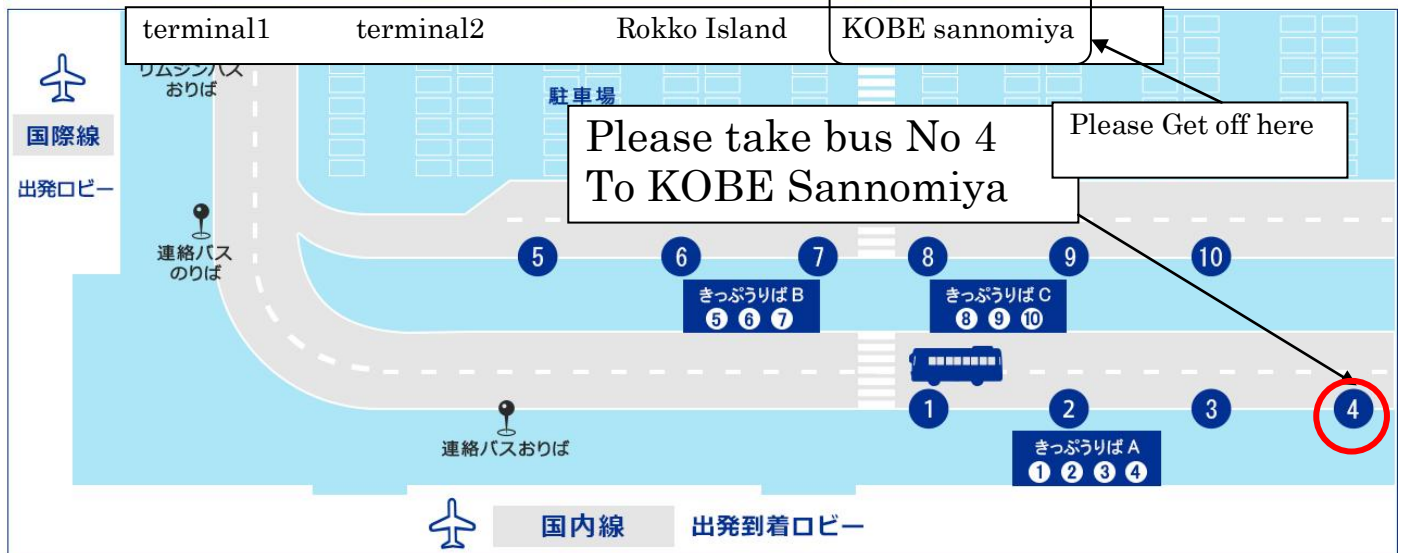
## If you are in Terminal 1

第1ターミナル1F リムジンバスのりば



- |  |   |
|--|---|
| 1 関西空港展望ホール行き                                      | 2 泉北ニュータウン・金剛・河内長野行き<br>淡路・鳴門・徳島行き          |
| 3 和歌山行き 茨木行き<br>南港・天保山・ユニバーサル・スタジオ・ジャパン™行き         | 4 尼崎行き 西宮行き                                 |
| 5 大阪駅前・茶屋町・新梅田シティ・新大阪・千里ニュータウン行き<br>南海なんば駅行き(深夜バス) | 6 神戸三宮・六甲アイランド行き<br>姫路・加古川行き<br>高野山(奥の院前)行き |
| 7 近鉄上本町・心斎橋行き<br>高松行き あべのハルカス行き                    | 8 大阪空港・蛍池駅行き<br>高速京田辺・京都駅八条口・京都市内行き         |
| 9 奈良行き 近鉄学園前・学研都市行き<br>大和八木行き                      | 10 天満橋行き 寝屋川・枚方・くずは行き<br>大阪城・日本橋行き 東大阪行き    |
| 11 なんば(OCAT)行き<br>岡山行き                             | 12 りんくうプレミアム・アウトレット行き                       |

## If you are in Terminal 2

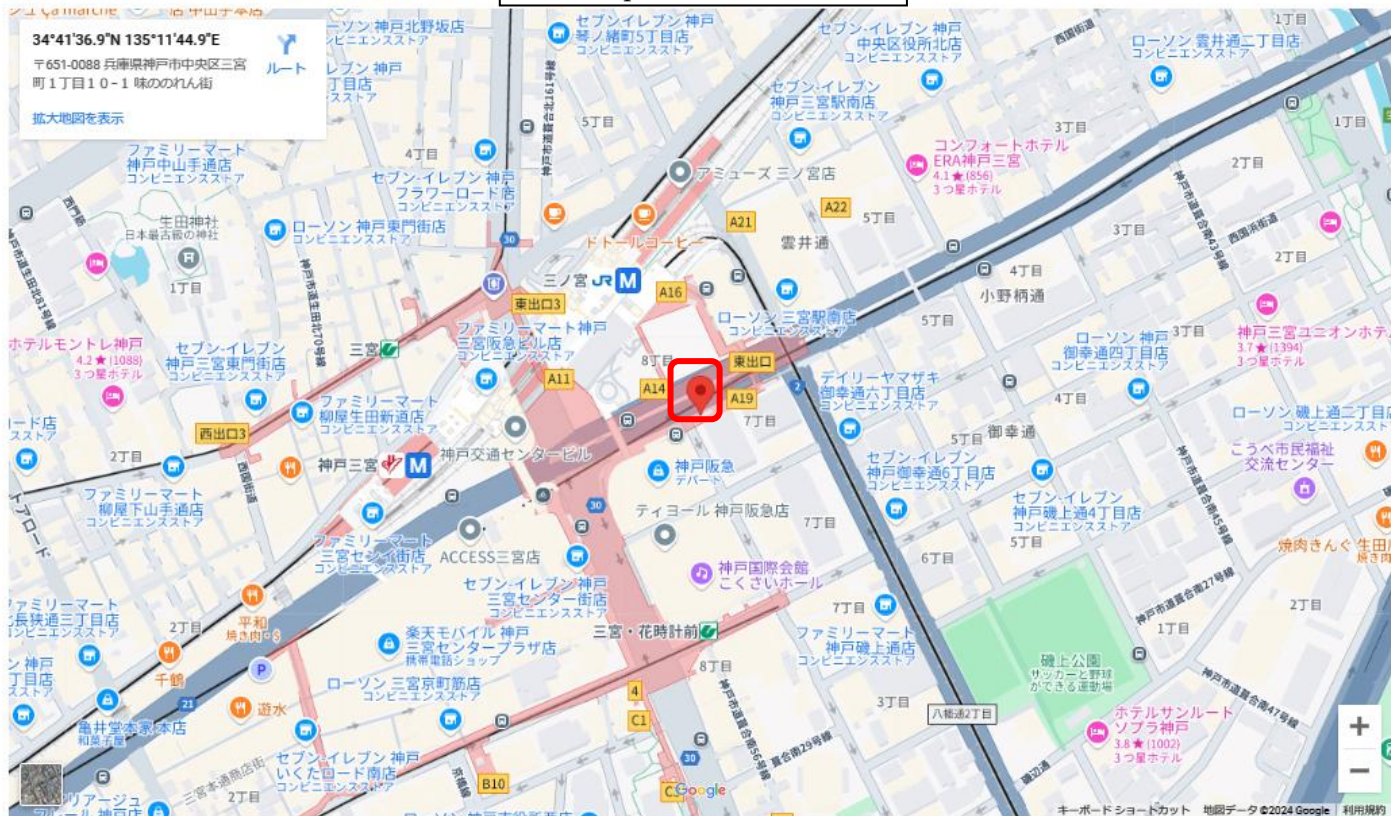


- |   |   |
|---|---|
| 1 大阪駅前・茶屋町・新梅田シティ・新大阪・千里ニュータウン行き          | 2 大阪空港・蛍池駅行き<br>高速京田辺・京都駅八条口・京都市内行き         |
| 3 尼崎行き 西宮行き<br>南海なんば駅行き(深夜バス)             | 4 神戸三宮・六甲アイランド行き<br>姫路・加古川行き<br>高野山(奥の院前)行き |
| 5 奈良行き 大和八木行き<br>近鉄学園前・学研都市行き             | 6 なんば(OCAT)行き 岡山行き                          |
| 7 和歌山行き 茨木行き<br>南港・天保山・ユニバーサルスタジオ・ジャパン™行き | 8 近鉄上本町・心斎橋行き 高松行き<br>あべのハルカス(天王寺駅)行き       |
| 9 泉北ニュータウン・金剛・河内長野行き<br>淡路・鳴門・徳島行き        | 10 天満橋行き 寝屋川・枚方・くずは行き<br>大阪城・日本橋行き 東大阪行き    |



おりば：国道21号線 神戸阪急北東側 バスおりば

BUS stop from KIX



Bus stop details

おりば：国道21号線 神戸阪急北東側 バスおりば



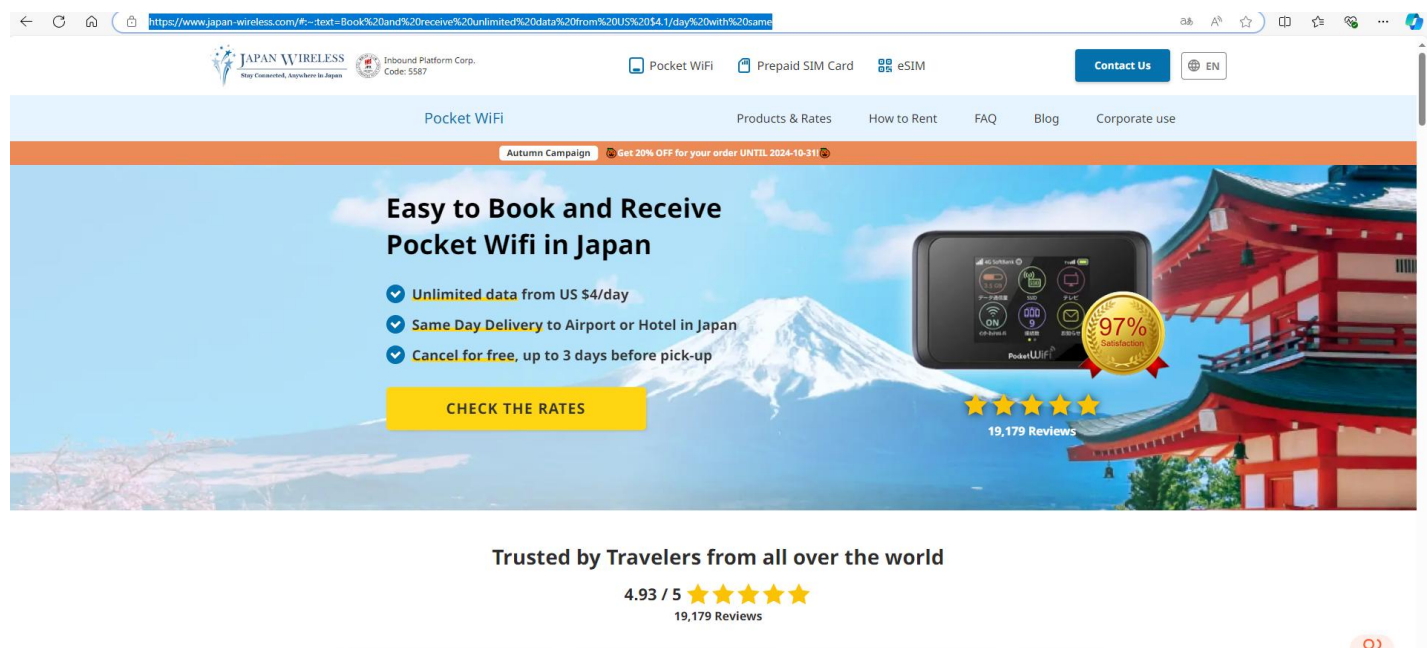




## Bus Stop to KIX



I recommend you to rent Japan Wireless Pocket Wi-Fi at Kansai Airport.





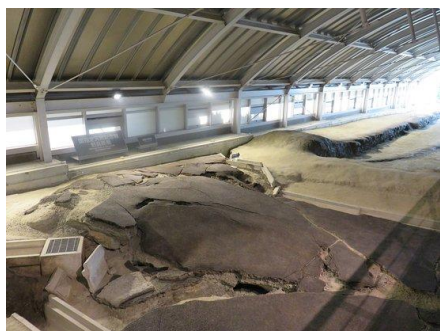
## Sight Seeing Awaji Island About Awaji Island

According to the ancient Japanese literature Kojiki and Nihon Shoki, Awaji Island is said to be the island of the sea.

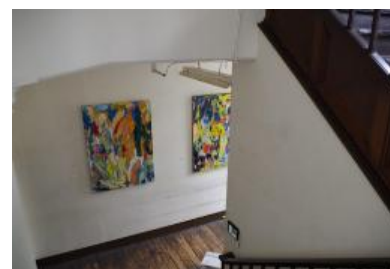
There are many facilities related to the legend of the birth of this country.

Aside from being close to the sea, Awaji Island has a historical culture, rich cuisine, and hot springs.  
(Awaji Island Tourist Guide)

It is also close to cities such as Kobe and Osaka, and has easy access to Kyoto, the ancient capital of Japan .<https://www.awajishima-kanko.jp/en/>



The famous tourist destination of Kobe is about a 30-minute bus ride away.  
IKUHART will also be holding a special exhibition in collaboration with the Tor Road Gallery in Kobe.



**Naoshima, Teshima, Shodoshima, famous for the Setouchi Triennale, Shikoku famous for pilgrimages, and many other places are easily accessible from Awaji Island.。。**

